

ARL2300 CLIENT SOFTWARE

July 30, 2020

●Address

Enter the IP address or hostname of the ARL2300 Ethernet controller. Factory default hostname is: <http://arlan-0.local>

●User, Password

Enter the username and password assigned to the ARL2300 Ethernet Controller. Factory defaults:

User: arl2300x

Password: Arl_2300Q

●TCP, UDP

Enter the TCP and UDP port numbers assigned to the ARL2300 Ethernet Controller. Factory default is 48752 for both.

●Connect

Click the Connect button to connect to your ARL2300 Ethernet Controller and control the receiver.

●Quit

Click Quit button to disconnect from the ARL2300 Ethernet Controller. Settings will be saved.

●Remote Receiver Power OFF

If checked, upon disconnection the remote receiver is also turned off.

●MODE

Select receiver demodulation mode. AUTO enables automatic mode selection of IF-BW and STEP. (AR5700D: Tetra GSSI group filtering not supported due to hardware limitation)

●IF-BW

Select IF bandwidth manually.

●ATT/AMP

Select input signal attenuation level or RF-Amp. AUTO enables automatic selection.

●ANT

Select an antenna, or ANT-PRG.

●AF Gain

Adjust the volume by dragging the slider or hovering the mouse over the slider and scrolling the mouse wheel up or down.

●V/U SQL, HF SQL

Adjust the squelch level: Use HF SQL for frequencies below 25 MHz, and V/U SQL for over 25MHz.

●Spectrum Display

Spectrum displayed in real time. Receive frequency is the center frequency.

Click on spectrum: Receiver is tuned to the clicked frequency.

Mouse wheel:

Change span of spectrum display (400kHz to 10MHz).

●SPAN

Select span of spectrum display (400kHz to 10MHz).

●AudioDelay

Shows audio output delay time between receiver and client.

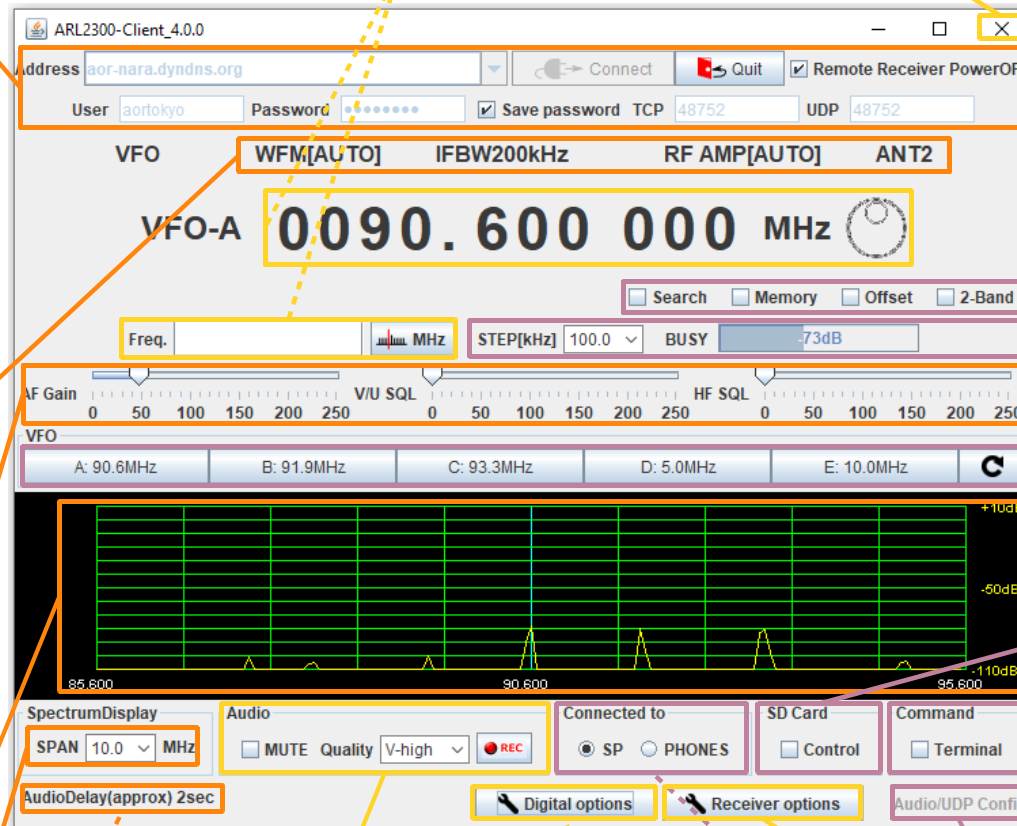
●Frequency

Change the receive frequency by either:

- Hovering with the mouse over each digit and scrolling the mouse wheel up or down.
- Entering the frequency via the PC keyboard + ENTER key or click [MHz] button.
- Hovering with the mouse over the dial symbol and scrolling the mouse wheel up or down.

●Close button (X)

Closes this software window. However click the QUIT button first, otherwise settings will not be saved.



●MUTE

Check to mute audio of this client.

●Quality

Adjust streaming and recording audio quality (MONO ONLY):

SETTING	LIVE SOUND	RECORDING TO PC
V-LOW	ADPCM 4bits/8kHz	16bits/8kHz/128kb/s
LOW	u-law 8bits/8kHz	16bits/8kHz/128kb/s
MIDDLE	PCM 16bits/8kHz	16bits/8kHz/128kb/s
HIGH	PCM 16bits/16kHz	16bits/16kHz/256kb/s
V-HIGH	PCM 16bits/22.05kHz	16bits/22.05kHz/352kb/s

●REC

Click to record audio on the client PC. Wav files are saved in the same folder than the client program.

●Receiver options

For various settings regarding CTCSS, DCS, voice squelch, noise reduction, notch, noise blanker, AFC, HF preselection filter, AGC, RF gain, IF-shift and analog voice descrambler.

●Digital options

(Only with AR5700D receiver) Various settings regarding NXDN/DCR, DMR, P25 and TETRA signal decoding.

●Search

Tunes through all frequencies between 2 specified frequency limits. Search instructions may be programmed into linkable "search banks".

●Memory

Create and scan banks of memory channels. Banks can also be linked.

●Offset

Simultaneously receive one main frequency and one sub-frequency within +/-5MHz from the main frequency. (Above 25MHz only)

●2-Band

Simultaneously receive one frequency below and one frequency above 25MHz.

●STEP [kHz]

To manually select a frequency step from the dropdown list.

●BUSY

Shows an open squelch. Grayed out when squelch is closed.

●S-Meter

Shows received signal level in dB.

●VFO-A, B, C, D, E

Select a VFO to operate on.

The curved arrow sign button does import all VFO content from the receiver.

●SD Card Control

When a SD card is inserted in the receiver, you can activate recording, play back and delete audio files.

●REC

Click REC button to start recording. File name format according to date and time: "MMDDhmm.WAV". Note: Same file names are overwritten.

●PLAY

Select a file and click PLAY button to start play back of the selected file.

●DEL

Select a file and click DEL button to delete the selected audio file.

●STOP

Click STOP button to stop recording or play back.

●Command Terminal

Enable the terminal window for sending commands to the receiver. (Details chapter 7.3 in the ARL2300 user manual.)

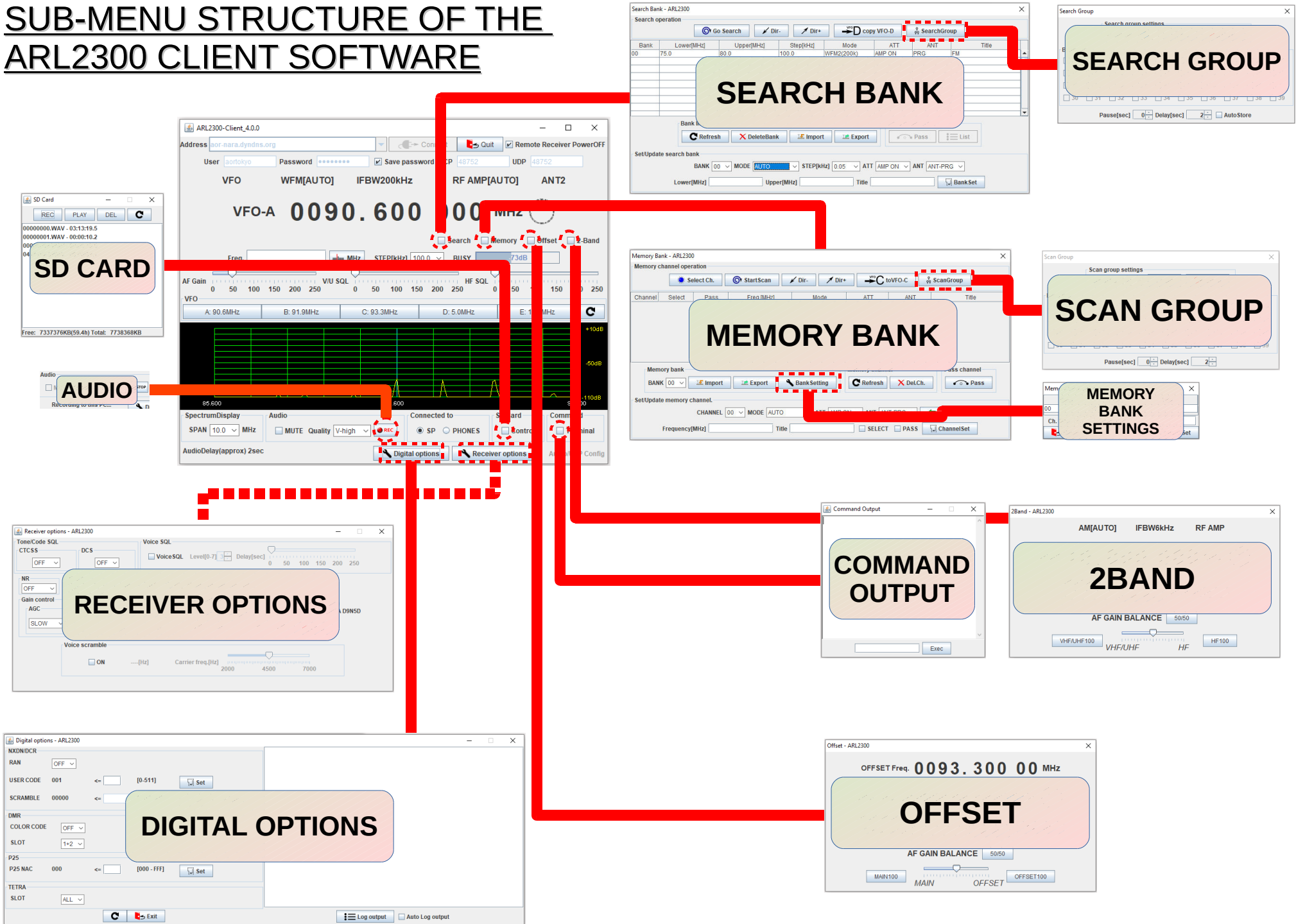
●Audio/UDP Config

(Can only be changed at client start, before the connection) Manually set the audio delay and UDP length.

●SP / PHONES

Choose audio source of the ARL2300. Either SP OUT or PHONES socket of the receiver.

SUB-MENU STRUCTURE OF THE ARL2300 CLIENT SOFTWARE



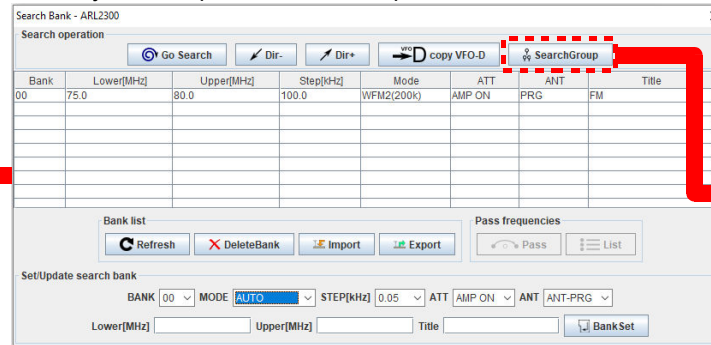
MEMORY CHANNELS

SCAN BANKS

SEARCH BANKS

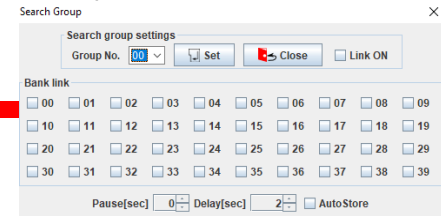
HOW TO SCAN A SEARCH BANK:

- Select the bank number.
- Click Go Search.
- Adjust the squelch level at the previous window.



CREATE A GROUP OF LINKED SEARCH BANKS:

- Select the Group No. to assign (except Group 00 for the AR2300 receiver).
- Check the bank number boxes you want to link.
- Check the LINK ON box.
- Click Set to start search.
- Adjust the squelch level if needed.

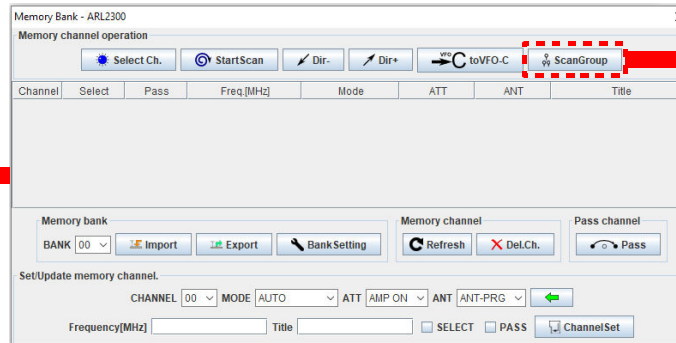


HOW TO CREATE A SEARCH BANK:

- Select a bank number.
- Set the lowest frequency.
- Set the highest frequency.
- Write a name describing this search bank.
- Set the receive mode, frequency step, amp/attenuator and antenna choice.
- Validate with "BankSet".

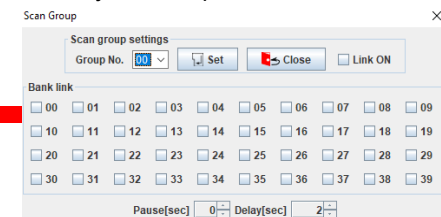
HOW TO SCAN A MEMORY BANK:

- Select the bank number.
- Click StartScan.
- Adjust the squelch level at the previous window.



CREATE A GROUP OF LINKED MEMORY BANKS:

- Select the Group No. to assign (except Group 00 for the AR2300 receiver).
- Check the bank number boxes you want to link.
- Check the LINK ON box.
- Click Set to start the scan.
- Adjust the squelch level if needed.



HOW SAVE A FREQUENCY INTO A MEMORY CHANNEL:

- Enter a frequency.
- Select a bank number.
- Select a channel number.
- Write a title describing this frequency.
- Set the receive mode, amp/attenuator and antenna choice.
- Validate with "ChannelSet".

